



HYBROLIGHT® STANDALONE

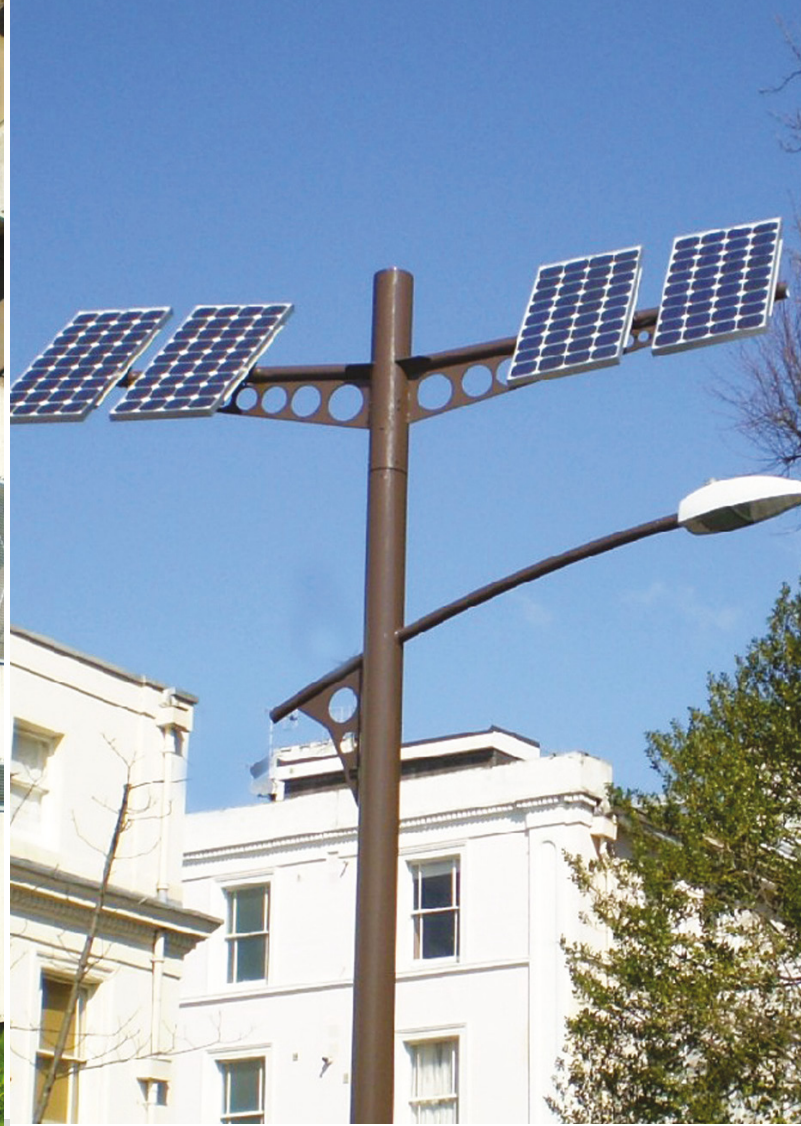
Hybrolight® Standalone is a hybrid renewable energy exterior lighting unit that is powered by energy from the sun and wind. Energy is collected by the solar photovoltaic panels and the electricity produced, along with that generated by the wind turbine, is stored by a deep cycle battery supplied with the system. A unique energy management system controls battery charging and load management

PRODUCT SUMMARY

- No cable trenching – significant cost savings
- No power bills
- Reduced pollution
- Reduced greenhouse gases (CO2)
- Range of low energy luminaires (ex PL, Cosmopolis)
- Single or twin lamp
- Designed for VAWT turbines
- Low maintenance
- PIR control option
- Standard Heights from 5m to 10m
- Custom colour finishes
- Designed for location

TECHNICAL SPECIFICATION (of typical 8m Hybrolight® Standalone)

- 8m purpose designed steel column and brackets by CU Lighting
- 1 x 42w PLT 2400 lumen P567 luminaire by Phosco at 6m
- 4 x 85w solar PV panels by BP at 7m
- 1 x 100w vertical axis wind turbine by Windside at 8m
- In ground battery compartment
- Automatic controls and energy design by EETS



HYBROLIGHT® INTEGRATED

Hybrolight® Integrated is a hybrid renewable energy exterior lighting unit that is powered by energy from the sun and wind. Energy is collected by the solar photovoltaic panels and electricity produced, along with the electricity generated by the wind turbine. Such a system may be critical to enable the on site generation from renewables targets for a development to be met.

PRODUCT SUMMARY

- Renewable energy lighting which integrates with system on site
- Reduced power bills
- Reduced pollution
- Reduced greenhouse gases (CO₂)
- Wide range of luminaires (ex CosmoPolis, CDM, SON)
- Single or twin lamp
- Designed for VAWT turbines
- Low maintenance
- PIR control option
- Standard Heights from 5m to 10m
- Custom colour finishes
- Designed for location

TECHNICAL SPECIFICATION (of typical 10m Hybrolight® Integrated)

- 8m purpose designed steel column and brackets by CU Lighting
- 1 x 140w CosmoPolis 16500 lumen P680 luminaires by Phosco at 8m
- 4 x 85w solar PV panels by BP at 9m
- 1 x 100w vertical axis wind turbine by Windside at 10m
- Automatic controls, connection and energy design by EETS

*Energy Equipment Testing Services Ltd
 Unit 2 Glan Lyn Industrial Estate
 Cardiff Road
 Taff Wells
 CF15 7JD

Tel: +44 (0)29 2082 0911
 E-mail: admin@eets.co.uk